

Classic TV brought to you by Nick at Nite

N



O



K

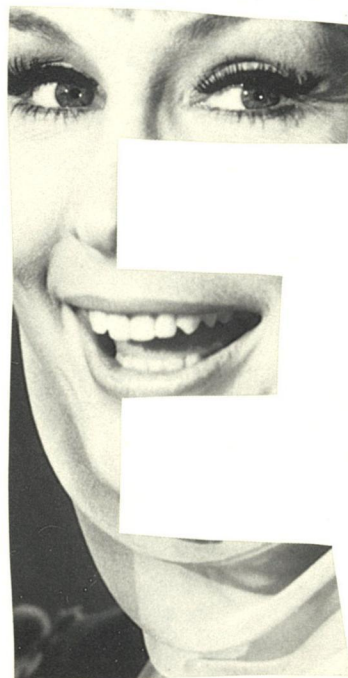
A T



Classic TV



I

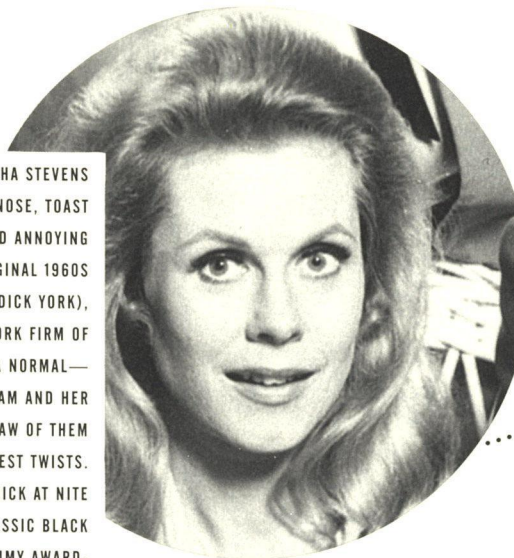


No one ever taught us how to watch television. How to tell the good shows from the bad. And how to know the really, really good—the Classic—from the rest. Classic is a distinction we make with our minds and our hearts. Classics are the shows we take with us throughout our lives. And there's no better place for them than the home of Classic TV—Nick at Nite. What makes a Classic a Classic? A good premise helps, but usually it's because of characters who become our friends, or **hello** even part of our families. Once we know them, we scheme along with Lucy and Ethel. Save L.A. with Friday and Gannon. Twinkle our noses with Samantha and blink with Jeannie. We share the highs and lows of Alex, Louie, Elaine and Latka... Mary, Lou, Ted and Rhoda... Rob, Laura, Buddy and Sally. These are the people we care about, on the shows we can count on. Nick at Nite delivers only wholesome, soothing entertainment. Nothing jarring, nothing scarring. Just Classic TV goodness, all night, every night.

Bewitched

TINK-A-TINK-A-TINK! WHEN SAMANTHA STEVENS (ELIZABETH MONTGOMERY) WIGGLED HER NOSE, TOAST DANCED, THE KITCHEN CLEANED ITSELF, AND ANNOYING GUESTS VANISHED. SAM WAS THE ORIGINAL 1960S SUBURBAN HOUSEWITCH. HUSBAND DARRIN (DICK YORK), AN ADVERTISING EXECUTIVE WITH THE NEW YORK FIRM OF MCMANN AND TATE, JUST WANTS TO LEAD A NORMAL—MAGIC-FREE—LIFE. BUT THE SPELLS OF SAM AND HER MOTHER, ENDORA (THE WITCHIEST MOTHER-IN-LAW OF THEM ALL), GIVE THIS DOMESTIC SITCOM ITS FUNNIEST TWISTS.

BEWITCHED RAN FOR EIGHT YEARS, AND NICK AT NITE BRINGS YOU THE FIRST TWO SEASONS IN CLASSIC BLACK AND WHITE. YOU'LL FIND THIS THREE-TIME EMMY AWARD-WINNER SIMPLY BEWITCHING.



NICK AT NITE'S STRONG TRADITION OF CLASSIC COMEDIES CONTINUES WITH AN OUTSTANDING SERIES FROM THE WRITERS AND PRODUCERS OF THE MARY TYLER MOORE SHOW. DURING ITS FIVE-YEAR RUN, TAXI GARNERED EMMY AWARDS IN EVERY MAJOR CATEGORY—14 IN ALL—INCLUDING THREE CONSECUTIVE HONORS AS OUTSTANDING COMEDY SERIES. EVERYMAN ALEX RIEGER (JUDD HIRSCH) AND HIS QUIRKY CABBIE CO-WORKERS HAVE BEEN APPLAUDED AS ONE OF THE MOST ENDURING AND BEST-LOVED ENSEMBLE CASTS IN TV HISTORY. TAXI ISN'T JUST ABOUT GETTING BEHIND THE WHEEL AND PICKING UP FARES; IT'S ABOUT GETTING BEHIND YOUR DREAMS AND PICKING UP YOUR FRIENDS WHEN THEY'RE DOWN. TONY BANTA (TONY DANZA) IS TRYING TO BECOME A BOXER. ELAINE NARDO (MARILU HENNER) IS TRYING FOR AN ART CAREER. FOREIGN-BORN MECHANIC LATKA GRAVAS (ANDY KAUFMAN), ECCENTRIC REVEREND JIM IGNATOWSKI (CHRISTOPHER LLOYD) AND LECHEROUS DISPATCHER LOUIE DEPALMA (DANNY DEVITO) ARE JUST PLAIN TRYING. THE FOLKS AT THE SUNSHINE CAB COMPANY ARE ALWAYS THERE FOR EACH OTHER, EXCEPT POSSIBLY LOUIE, WHO'S BASICALLY THERE FOR HIMSELF—THERE'S A REASON HE SPENDS MOST OF HIS DAY IN A CAGE! HAIL TAXI, THE NEWEST CLASSIC IN THE NICK AT NITE GARAGE.

Taxi





NEW ON NICK AT NITE

I Dream of Jeannie



AT THE HEART OF MOST SITCOMS LIES A SECRET SHARED BY THE MAIN CHARACTERS AND THE AUDIENCE, AND THIS SHOW HAS A DOOZY. DURING A MISSION, ASTRONAUT TONY NELSON (LARRY HAGMAN) FINDS A BOTTLE IN THE SAND. A PUFF OF PINK SMOKE LATER, HE'S THE MASTER OF A 2,000-YEAR-OLD GENIE NAMED JEANNIE (BARBARA EDEN). NOW TONY'S ON A NEW MISSION—TO CONCEAL JEANNIE'S POWERS FROM SNOOPY DR. BELLOWS (HAYDEN RORKE) AND THE OTHER NASA BIGWIGS. THE ONLY ONE HIP TO JEANNIE'S SECRET IS TONY'S PAL, ROGER HEALY (BILL DAILY, WHO LATER PLAYED BOB'S NEIGHBOR HOWARD ON THE BOB NEWHART SHOW). FOR CLASSIC TV FANS EVERYWHERE, I DREAM OF JEANNIE ON NICK AT NITE IS A WISH COME TRUE.

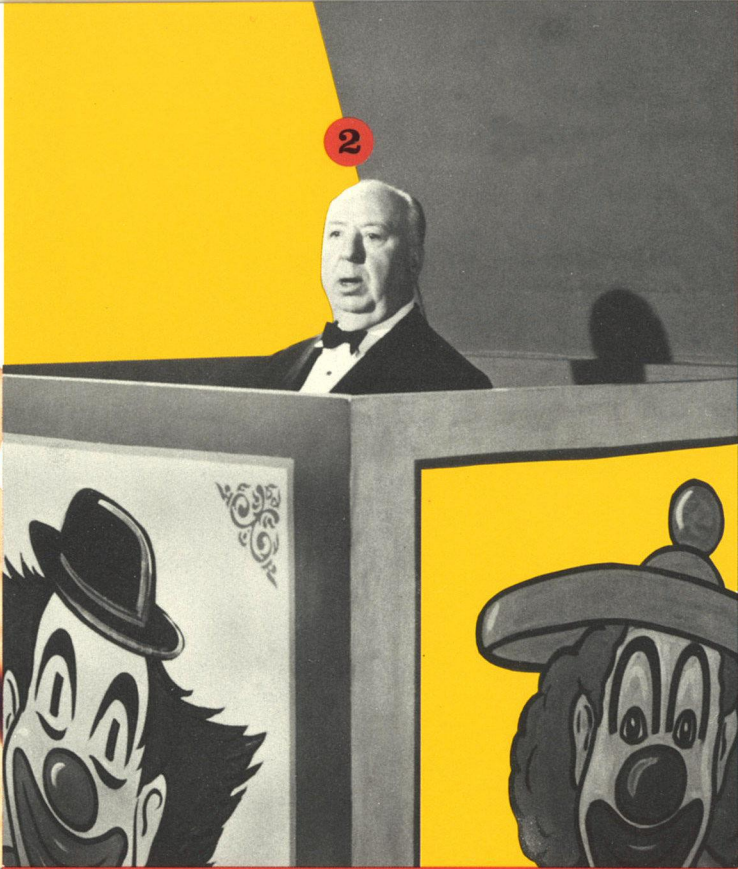


I Love Lucy

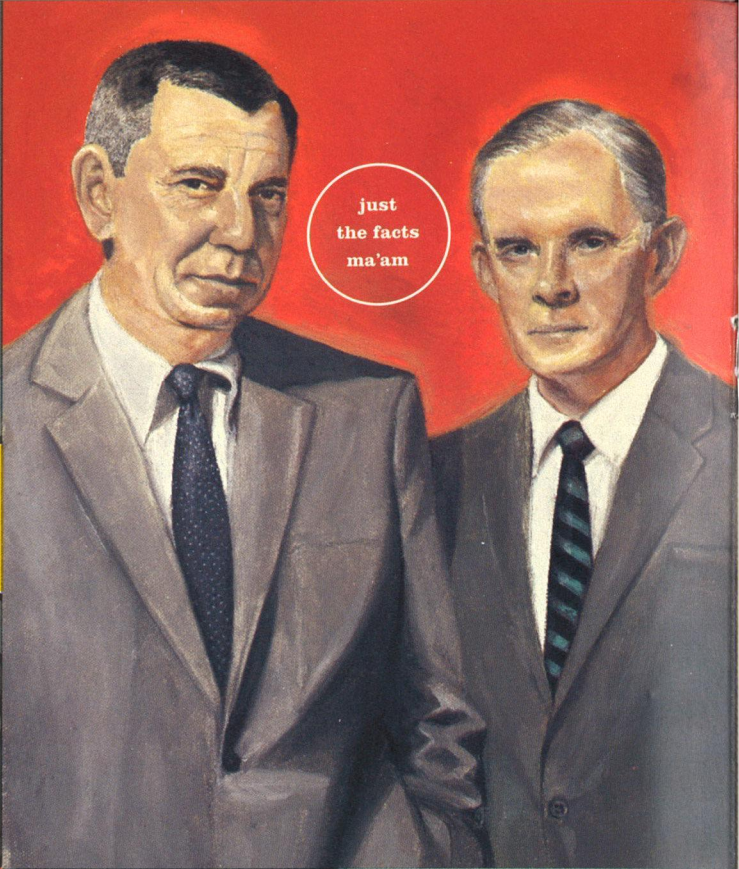
QUICK, NAME YOUR FAVORITE I LOVE LUCY EPISODE. STUMPED? THOUGHT SO. THERE ARE JUST TOO MANY GREAT ONES. LUCY AND ETHEL STEALING JOHN WAYNE'S FOOTPRINTS, SELLING VITAMEATAVEGAMIN, WORKING IN THE CANDY FACTORY...THE LIST GOES ON. PERHAPS THE MOST MEMORABLE, LUCY GOES TO THE HOSPITAL (TO GIVE BIRTH TO TV SON LITTLE RICKY), CAPTIVATED AMERICA THE VERY SAME NIGHT THAT LUCILLE BALL GAVE BIRTH TO HER REAL-LIFE SON, DESI ARNAZ, JR. NOW NICK AT NITE HAS BROUGHT TV'S CLASSIC COMEDIENNE BACK HOME TO PRIME TIME, WHERE SHE BELONGS. AND IF YOU THINK YOU'VE SEEN LUCY, THINK AGAIN—BECAUSE NICK AT NITE HAS RESTORED 4 MINUTES PER EPISODE THAT THE OTHER GUYS EDITED OUT. MORE LUCY TO LOVE, ON THE NETWORK THAT LOVES LUCY. LUCILLE BALL, CHOSEN AS TV GUIDE'S ALL-TIME BEST COMIC ACTRESS.



1



2



just
the facts
ma'am



You're
gonna make
it after
all



5



6

GET SMART DOES THINGS STRICTLY BY THE NUMBERS. CONTROL AGENT MAXWELL SMART (DON ADAMS) IS BETTER KNOWN AS 86. HIS PARTNER IS THE LOVELY 99 (BARBARA FELDON). THE SHOW ITSELF IS 100 PERCENT INSPIRED LUNACY, FROM CREATORS BUCK HENRY AND MEL BROOKS. AND DURING ITS 5-YEAR RUN, GET SMART RACKED UP 7 EMMY AWARDS, INCLUDING 3 BY ADAMS. IN HIS MISSIONS AGAINST THE DIABOLICAL KAO'S, MAX USES ALL KINDS OF ULTRA-GIMMICKY GADGETS: HIS EVER-HANDY SHOE PHONE, A SUPER-INTELLIGENT ROBOT, AND THE INFAMOUS "CONE OF SILENCE." THIS MADCAP SPY SPOOF CAME ALONG AS OUR MAN FLINT AND 007 WERE THE RAGE. IT'S NOT JUST CLASSIC—IT'S ALSO CLASSIFIED!

Get Smart

1

THE HANDS DON'T EVER MOVE ON THE CLOCKS IN THE WJM NEWSROOM. BUT MARY TYLER MOORE AS TV NEWS PRODUCER MARY RICHARDS MOVED TELEVISION FORWARD BY LEAPS AND BOUNDS. NEVER BEFORE HAD A TV SERIES FEATURED AN INDEPENDENT CAREER WOMAN AS ITS MAIN CHARACTER. DURING THE DEVELOPMENT OF THE SHOW, THE PRODUCERS DECIDED THAT THE MARY RICHARDS CHARACTER HAD TO BE SINGLE, NOT DIVORCED, BECAUSE ACTRESS MOORE WAS FRESH FROM HER ROLE AS THE LOVING WIFE ON THE DICK VAN DYKE SHOW—AND HOW COULD ANYONE POSSIBLY DIVORCE DICK VAN DYKE? THE MARY TYLER MOORE SHOW WON A RECORD-SETTING 27 EMMY AWARDS. CHALK IT UP TO "SPUNK." MARY TYLER MOORE, NAMED TV GUIDE'S BEST COMIC ACTRESS OF THE '70S, THE MARY TYLER MOORE SHOW, SELECTED AS ENTERTAINMENT WEEKLY'S #1 ALL-TIME FAVORITE TV SHOW.



The Mary Tyler Moore Show

You're gonna make it after all

IT'S THE MOST FAMOUS PROFILE IN TELEVISION HISTORY, AND IT BELONGS TO THE DIRECTOR WHO CAME OUT FROM BEHIND THE CAMERA AND BECAME A STAR IN THE PROCESS. HITCHCOCK FILLED THE SCREEN WITH MESMERIZING, HORRIFYING AND VILLAINOUS STORIES OF DECEIT. EACH EPISODE IS A SLICE OF LIFE, HAND-CUT BY THE VERY SHARP, TOTALLY WARPED BLADE OF THE MASTER OF SUSPENSE. HITCHCOCK FEATURES TOP PERFORMERS, INCLUDING ROBERT REDFORD, WALTER MATTHAU AND BURT REYNOLDS (AND INCIDENTALLY, ITS PRODUCER, NORMAN LLOYD, LATER PORTRAYED DR. DANIEL AUSCHLANDER ON ST. ELSEWHERE). NICK AT NITE IS VEDDY PLEASED INDEED TO BRING YOU THESE CLASSIC TALES OF SUSPENSE. GOOD EEEEEVENING.

Alfred Hitchcock Presents

2

IT'S THE GREATEST EXAMPLE OF GROUP THERAPY IN TELEVISION HISTORY. VIEWERS ALL OVER AMERICA TUNE IN TO THE OFFICE OF CHICAGO PSYCHOLOGIST DR. BOB HARTLEY (BOB NEWHART) TO LAUGH THEIR TROUBLES AWAY. STRANGELY ENOUGH, SOME OF THE CRAZIEST PEOPLE IN BOB'S LIFE ARE HIS FRIENDS, NOT HIS PATIENTS. JERRY IS A NEUROTIC DENTIST; CAROL IS A LOVE-STARVED RECEPTIONIST; AND NEIGHBOR HOWARD BORDEN IS A CHILD TRAPPED IN THE BODY OF AN AIRLINE PILOT. LUCKY FOR BOB HE HAS WIDE-EYED, WISE AND WONDERFUL WIFE EMILY (SUZANNE PLESHETTE) TO KEEP HIM SANE. BY THE WAY, THE SHOW'S THEME SONG WAS CO-WRITTEN BY LORENZO MUSIC—THE VOICE OF "CARLTON YOUR DOORMAN" ON RHODA.

The Bob Newhart Show

5

Dragnet

CLIPPED SENTENCES. FEW PLEASANTRIES. JUST THE FACTS, MA'AM. SUCH IS THE MODUS OPERANDI OF DRAGNET'S JOE FRIDAY (JACK WEBB). THERE'S A CITY TO PROTECT. TONS OF PAPERWORK. MILES OF RED TAPE. BUT NOT EVEN GALLONS OF BAD COFFEE CAN DETER FRIDAY AND HIS PARTNER, JOE GANNON (HARRY MORGAN), FROM PROVING TO CREEPS AND PUNKS THAT CRIME DOESN'T PAY. WEBB ALSO WROTE, DIRECTED, PRODUCED AND NARRATED MOST OF DRAGNET'S REALISTIC EPISODES. THAT'S EVEN HIS HAND SMACKING THE MARK VII CHISEL AFTER THE END CREDITS. GOT IT? GOOD. 10-4.

just the facts ma'am

DICK VAN DYKE, NICK AT NITE'S CHAIRMAN, HONORED BY TV GUIDE AS THE BEST COMIC ACTOR OF THE '60S. THE DICK VAN DYKE SHOW, ENTERTAINMENT WEEKLY'S #2 ALL-TIME FAVORITE TV SHOW

ROB AND LAURA PETRIE (DICK VAN DYKE AND MARY TYLER MOORE) HAVE IT ALL. A BEAUTIFUL SUBURBAN HOME IN NEW ROCHELLE. A PICTURE-PERFECT FAMILY. WARM NEIGHBORS. AND ROB'S AGREEABLY WACKY CO-WORKERS, WHO MAKE IT FUN TO GO TO THE OFFICE EVERY DAY. THIS FIFTEEN-TIME EMMY AWARD-WINNER (INCLUDING THREE FOR OUTSTANDING COMEDY PROGRAM) IS THE STANDARD BY WHICH ALL OTHER HOME/OFFICE SHOWS ARE MEASURED. LOOSELY BASED ON CREATOR CARL REINER'S DAYS AS A WRITER FOR YOUR SHOW OF SHOWS, THIS CLASSIC SITCOM IS A RIOTOUS BEHIND-THE-SCENES GLIMPSE AT THE MAKING OF A VARIETY SHOW. BUT MORE IMPORTANTLY, IT OFFERS A REAL, ENTERTAINING, BEHIND-THE-SCENES GLIMPSE AT THE MAKING OF A MARRIAGE. (NOT TO MENTION A VALUABLE SAFETY LESSON—DON'T KEEP YOUR OTTOMAN TOO CLOSE TO THE FRONT DOOR!)

The Dick Van Dyke Show

6



DURING THE RUN OF THE LUCY SHOW, AMERICA FINALLY GOT TO SEE ITS FAVORITE REDHEAD IN FULL, GLORIOUS COLOR. VIEWERS ALSO SAW LUCY'S DAZZLING, SCHEMING BLUE EYES AND THE BULGING PURPLE VEINS IN HER BOSS'S NECK (MR. MOONEY, PLAYED BY GALE GORDON). LUCY CARMICHAEL (LUCILLE BALL), A WIDOW WITH TWO KIDS, ALWAYS GETS WHAT SHE WANTS. AND HER HOUSEMATE VIV (VIVIAN VANCE) CAN'T HELP BUT COME ALONG FOR THE BUMPY RIDE. THIS SLAPSTICK-FILLED FOLLOW-UP TO I LOVE LUCY WAS A TOP 10 HIT FOR ITS ENTIRE SIX-YEAR RUN.

The Lucy Show

BY THE '70S, TELEVISION HAD SEEN MANY SUPER-POWERED ALIENS. BUT NONE BURST OUT OF AN EGG AND CAPTURED AMERICA'S HEART QUITE LIKE MORK (ROBIN WILLIAMS, WHO IMPROVISED MUCH OF THE ROLE). HE DRANK THROUGH HIS FINGER, SAT UPSIDE DOWN, SQUATTED ON AN EGG TO GIVE BIRTH TO A SIX-FOOT-TALL BABY (MEARTH, PLAYED BY JONATHAN WINTERS). AND WHEN HE EXCLAIMED "NA-NU, NA-NU," HE SPOKE FOR AN ENTIRE NATION. MORK FROM ORK WAS THE BRAINCHILD OF GARRY MARSHALL, WHO FIRST HATCHED THE CHARACTER ON AN EPISODE OF HAPPY DAYS. ROBIN WILLIAMS LANDED THE PART BECAUSE, SAID MARSHALL, "HE WAS THE ONLY MARTIAN WHO APPLIED."

Mork and Mindy



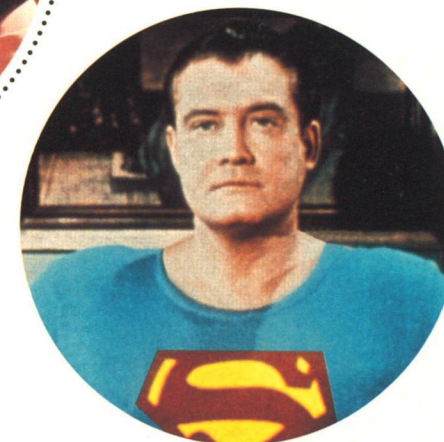
F Troop

MEET THE MEN AND WOMEN WHO PUT THE 'WILD' IN WILD WEST! IT'S THE END OF THE CIVIL WAR, AND CAPTAIN WILTON PARMENTER IS THE NEWLY-ARRIVED COMMANDER OF FORT COURAGE. BUT IT'S MISCHIEF-MAKERS SERGEANT O'ROURKE AND CORPORAL AGARN WHO REALLY RUN FORT COURAGE—NOT TO MENTION AN ILLEGAL TRADING OPERATION WITH THE "ENEMY" HEKAWI INDIANS (WHO GOT THEIR NAME WHEN THEY STAKED THEIR TERRITORY AND EXCLAIMED "WHERE THE HECK ARE WE?"). FORGET THE ALAMO! F TROOP IS THE UNTAMED FRONTIER OF COMEDY.



The Adventures of Superman

INSIDE EACH OF US BEATS THE HEART OF A HERO. BUT ALAS, MOST OF US WILL NEVER STRIP DOWN TO A CAPE AND TIGHTS IN A PHONE BOOTH. NOR WILL WE BEND STEEL, PEER THROUGH CEMENT WALLS, OR SAVE OUR CO-WORKERS FROM PERIL. SIGH. WE'LL JUST HAVE TO LEAVE THE FIGHT FOR TRUTH, JUSTICE AND THE AMERICAN WAY TO GEORGE REEVES, THE SMALL SCREEN'S ORIGINAL SUPERMAN. NICK AT NITE IS PROUD TO KEEP THOSE VICARIOUS THRILLS COMING. UP, UP AND AWAY!



The image features a complex, abstract pattern of overlapping diagonal lines. The background is a vibrant red. Overlaid on this are numerous lines in white, yellow, and orange, creating a dense, textured effect. The lines are oriented diagonally, roughly parallel to each other but overlapping in a way that creates a grid-like or woven appearance. The overall effect is dynamic and energetic.

friends forever, Nick at Nite



it's been fun